

# Frank Phillips College

## Scholarship Programs & Processes



### Including:

- ◆ Development Corporation Scholarships
- ◆ Private Scholarships
- ◆ Institutional Scholarships



## A Message from the President



Frank Phillips College has made the scholarship application process uniquely simple - complete one form and be considered for more than 100 scholarship opportunities. This Scholarship Publication contains comprehensive information about scholarships that are coordinated through the Frank Phillips College Development Corporation and private donors. Also included are other scholarship sources for which students may be eligible to apply - again, several opportunities to attend FPC. The college's faculty, staff, and administration have worked hard to improve the entire scholarship process; this document represents the culmination of their efforts.

All students applying for scholarships are required to use the new, simple, and easy to process form unless otherwise stipulated in the scholarship description.

Applicants will then be selected based upon the criteria of the scholarship which may include final approval from the donor. This process will ensure that the scholarship resources will be used to assist as many students as possible, thus providing more student access to higher education - our ultimate goal.

There are many scholarship opportunities for students attending Frank Phillips College. Each year through the generous support of FPC donors more scholarships become available. Again, apply now to attend FPC - Start Here and Go Anywhere!

Sincerely,

A handwritten signature in black ink that reads "Herbert J. Swender". The signature is written in a cursive, flowing style.

Dr. Herbert J. Swender, Sr.  
President of Frank Phillips College

# Table of Contents

Application Process & Requirements	3
Development Corporation	4
Development Corporation - Endowed Unrestricted Scholarship Funds	5
Development Corporation - Endowed Named Scholarship Funds	7
Development Corporation - Futures' Scholarship Program	12
Private Scholarships	13
Institutional Scholarships	24
Other Scholarships	25
Names & Numbers to remember	Back Cover

## **General Scholarship Application - center of publication**

This publication is published annually in the spring and is intended to be a resource for those seeking financial assistance at Frank Phillips College. If you have any comments or suggestions, please contact the Office of College Advancement & the Development Corporation at Frank Phillips College. The information in this document may change without notice.

Frank Phillips College is an equal opportunity community college. © fpc op/cr 2/08

# Application Process & Requirements

## How to Apply for Scholarships

1. Complete the General Scholarship application in the center of this publication. Additional scholarship applications can be obtained in the Office of Student Financial Services and via the Frank Phillips College website at [fpcctx.edu/Scholarships/](http://fpcctx.edu/Scholarships/). Completed application forms must be on file in the Student Financial Services Office by April 1st.
2. Carefully complete the scholarship application, answering all questions.
3. Scholarship applicants must be eligible for admission to the college in accordance with existing policies found in the admission section of the *FPC Catalog*.
4. Scholarship applicants are required to make application for financial aid in the Office of Student Financial Services. Since federal and state financial aid programs are available only to U.S. citizens, this requirement does not apply to international students.
5. Dorm scholarship applicants must have a completed application for Housing & Food Service on file in the Student Services Office and are required to have paid the housing deposit.
6. High school seniors must submit a current transcript of all high school courses and grades attached to the scholarship application.

## General Guidelines for Scholarship Recipients

1. Recipients must be enrolled or plan to enroll in a minimum of 12 hours per semester, unless otherwise stated.
2. Once enrolled, scholarship recipients are expected to fulfill and maintain the semester hour and grade point requirements specified for the scholarship.
3. All scholarship recipients are required to apply for financial aid.
4. All scholarship recipients are required to enroll in FYIS0101 (First Year Institute Seminar course).
5. All scholarship recipients are required to make an appointment with the Office of College Advancement to complete a profile.
6. Scholarship recipients are subject to drug testing.
7. Deadline to apply for all scholarships is April 1st unless stated otherwise.

# Development Corporation

The purpose of the Development Corporation is to strengthen and contribute to the educational mission of Frank Phillips College by seeking, receiving and distributing gifts, bequests, and donations, and to account for and manage assets submitted to the Corporation on behalf of Frank Phillips College and the residents of its service area.

A non-profit, tax-exempt Texas corporation founded in 1981, the Development Corporation consists of a group of community members who seek to obtain gifts and grants needed beyond the scope of tax-based funding, and to manage and expend these items for the development of Frank Phillips College. The Development Corporation Funds are distributed to benefit and advance the College, and for the encouragement and assistance of its students and faculty.

Development Corporation activities include, but are not limited to:

1. Community Awareness
2. Scholarships and loans to students of Frank Phillips College
3. Development of special facilities
4. Purchase real estate for the expansion of the College
5. Recognition of outstanding educators
6. Recognition of outstanding scholarship or leadership

Members of the Development Corporation are the original Board of Directors, or any person, organization or corporation who makes an annual gift of \$200 or more to Frank Phillips College Development Corporation. A self-perpetuating Board of Directors who represents the positive leadership of the community governs the Corporation.

# Endowed Unrestricted Scholarship Funds

These funds are available to students through Presidential, Dean's, Re-Entering Adult Learners (REAL), Access, and Opportunity scholarships. Donors are encouraged to consider this category, which will financially assist a wide variety of students with the direct cost of tuition, fees, and books.

Donors may make contributions to the Endowed Unrestricted Scholarship Fund at any level, with a minimum of a \$5 investment. For donors desiring permanent recognition in the Endowed Unrestricted Scholarship Fund a minimum contribution of \$20,000 is required. To be recognized as an Endowed Medallion Donor, a minimum contribution of \$35,000 is required. These funds are permanently endowed and are managed through the College and the Development Corporation's Investment Plan. Recipients are selected by the FPC Scholarship Committee, which includes representation from the Development Corporation, the College's Foundation.

Special recognition to the following for contributions of \$10,000 and above:

- **Magic Plains Industrial Development**, \$500,000 in 1999

# MPID

- **United Supermarkets**, a three-year commitment totaling \$50,000, beginning 2004



# Endowed Unrestricted Scholarships

## Endowed Unrestricted Scholarship Funds

### Presidential Scholarships

**Award:** \$800.00 one-year award (\$400 per semester)

**Criteria:**

- Incoming freshmen from high schools in the College's service area (top nine counties of the Texas Panhandle) who demonstrate academic excellence and leadership in extracurricular high school and community activities
- A minimum 3.5 high school grade point average

### Dean's Scholarships

**Award:** \$600 one-year award (\$300 per semester)

**Criteria:**

- Students who demonstrate academic excellence and leadership in extracurricular high school/college and community activities
- A minimum 3.0 grade point average

### Access Scholarships

**Award:** \$400 one-year award (\$200 per semester)

**Criteria:**

- Students who demonstrate leadership in extracurricular high school/college and community activities

### Opportunity Scholarships

**Award:** \$400 one-year award (\$200 per semester)

**Criteria:**

- The Office of Student Services will consider personal circumstances and other aid available in the awarding process of these scholarships
- A minimum 2.0 grade point average

### Re-Entering Adult Learner (REAL) Scholarships

**Award:** \$400 one-year award (\$200 per semester)

**Criteria:**

- Full- and part-time incoming students who have been out of high school for at least one year and demonstrate an initiative in pursuing a degree or certificate to help them fulfill professional goals
- A minimum 2.0 grade point average

## Endowed Named Scholarships

### Endowed Named Scholarships

The passing of someone close to you is a time for remembrance, reflection, and recognition. Many people search for ways to commemorate the life of a husband, wife, dear friend, or family member to make a lasting statement about what that person meant to them.

At Frank Phillips College, you can make a gift that will stand as a lasting memorial to a loved one and at the same time advance our mission in a meaningful way. For a one-time gift of \$20,000, you have the opportunity to create an endowed scholarship fund.

An endowment allows gifts to be made in perpetuity, as these assets are invested and the income produced is used for the purposes you specify. An endowment fund carries the name of the loved one and can provide general, unrestricted support to FPC or can be designated for a specific program.

For more information about opportunities for giving at FPC or to create an endowed scholarship to honor a loved one, please contact the Office of College Advancement at FPC, 806-457-4200, ext. 798.

#### Joel Douglas Adkins Memorial Scholarship

Joel Douglas Adkins was born on July 1, 1988, in Canadian, Texas. He grew up in Stinnett and attended school in the Plemons-Stinnett-Phillips CISD system through the sixth grade before his family moved to Perryton, Texas, in the spring of 2001. Joel was a sophomore at Perryton High School at the time of his accidental death, May 21, 2005.

Joel was active in football, basketball, track, choir, and drama, and also participated in church youth activities. His easy-going nature, caring heart, and sense of humor endeared him to his classmates in Stinnett and Perryton. "He could always make you laugh," a friend said of Joel days after his death. "He always put other people before himself and was a friend to everyone." Joel loved music and the Lord, and as a self-taught guitarist, played in a church youth group band. One of his coaches said, "He was a great, Christian kid."

Joel's grandparents, Doug and Wanda Adkins of Borger, Texas, established this scholarship to annually benefit a graduate from Perryton High School and a graduate from West Texas High School in Stinnett. The scholarships will target students who need extra assistance for their opportunities to attend college.

After his passing, Joel's mother said, "He brought joy and laughter into our lives." Through this memorial scholarship, lives of others will be touched in Joel's name and receive the opportunities to experience the joys of richer lives through higher education.

**Award:** (2) \$1,500 one-year awards (\$750 per semester)

**Criteria:**

- One (1) West Texas High School graduate and one (1) Perryton High School graduate with financial need. Awardees may attend the Borger Campus or the Allen Campus.



## Endowed Named Scholarships

### Mickie Gassaway Memorial Scholarship

The Mickie Gassaway Memorial Scholarship was established by Roy and Judy Gurley in 1993. Mrs. Gassaway became a Borger resident in 1947 and married Clyde M. Gassaway, a Borger attorney, in 1956. She spent many hours visiting sick people and nursing home residents, sending them cards and flowers, and caring for and being concerned for them. She was stricken with cancer in 1987. During many trips for treatment at M.D.Anderson Hospital in Houston, she was always in high spirits and was a real encouragement and inspiration to other M.D.Anderson patients and the staff. Her cheerfulness in trying circumstances was a great blessing for the many people whose lives she touched. Her death occurred on May 19, 1993.

**Award:** \$1,000 one-year award (\$500 per semester)

**Criteria:**

- A nursing student who has been admitted to the Licensed Vocational Nursing program
- This student must maintain a minimum 3.0 grade point average and continue enrollment at FPC for at least one academic year.

**Deadline to apply:** November 15th

### Pam Maxwell Memorial Scholarship

Pamela (Pam) Maxwell was a person bubbling with enthusiasm for life and a special, compassionate love of all things. Pam's active interests were widely varied and included sharks, dogs, astronomy, and music.

Pam attended Oak Park Elementary School in Bartlesville, Oklahoma and graduated from Dumas High School. Pam completed the required hours for an associates degree from Frank Phillips College, majoring in pre-law. While attending FPC, Pam was on the Dean's Honor Roll and a member of Phi Theta Kappa, the national junior college honor society.



Pam died in an auto accident in December 1982. To provide a living memorial to their daughter, Wanda and James Maxwell set up the Pamela Louise Maxwell Memorial Scholarship Fund at Frank Phillips College. This scholarship is now governed by Ron, Pamela's brother, and Donna Maxwell.

**Awards:** (4) \$500 one-year awards (\$250 per semester)

**Criteria:**

- A minimum 2.5 grade point average
- This fund supports four scholarships:
  - 1) Student Senate President
  - 2) Phi Theta Kappa Honor Society President
  - 3) Borger High School Graduate
  - 4) Dumas High School Graduate

## Endowed Named Scholarships

### Wes McElreath Memorial Scholarship

To honor the memory of Wes McElreath, family and friends established the Wes McElreath Memorial Scholarship Fund at FPC in the spring of 1998. Wes was a graduate of Borger High School. While attending FPC as an agriculture major, he was in a fatal car accident. Wes was a Presidential Scholarship recipient and was active in both agriculture and baseball.

**Awards:** (2) \$500 one-year awards (\$250 a semester) This scholarship is renewable for up to (4) semesters.

**Criteria:**

- Borger High School Graduate
- A student involved in 4H, FFA, or an interest in agriculture
- A full-time student



### Kevin McKinney Memorial Scholarship

Kevin Miles McKinney was a happy, friendly person who loved his family, sports, and people from all walks of life. He was caring, competitive, and compassionate.

Kevin was born and raised in Borger where he attended Crockett Elementary, Borger Middle School, and Borger High School. He participated in Tri City Youth Football, Little Dribblers Basketball, and Borger Little League. Kevin was a member of Calvary Baptist Church.

Kevin was awarded a football scholarship to Southern Methodist University in 1983. He played there for four years and graduated in 1988. He was a graduate assistant in football for the University of Utah for two years and received a Masters Degree in 1991.

Kevin began teaching and coaching football at Pampa High School in August of 1994. He had been coaching five months when he was killed in an automobile accident. His parents, Mike and Marlene, and his brothers, Kelly and Joshua established a living memorial to their beloved son and brother by setting up the Kevin McKinney Memorial Scholarship. The scholarship is a way of providing worthy young people with funds to further their education at Frank Phillips College.

**Awards:** (2) \$2000 one-year awards (\$1000 per semester)

**Criteria:**

- Borger High School Graduate
- A minimum 2.5 grade point average



## Endowed Named Scholarships

### Phillips High School Alumni Association Scholarship

The Phillips High School Alumni Association established this scholarship to honor the memories of James Irvin Kimmins, who served as PHS principal for 33 years, and of Ray Robbins, the instrumental music director for the Phillips schools for 21 years.



**Mr. Kimmins** was born in Ector, Texas in 1912 and earned his bachelor's and master's degrees from West Texas State University in Canyon. He joined the staff at PHS in 1939 as a math teacher and coach. Following army service during World War II, Mr. Kimmins returned to PHS and, at the request of the school board, became the principal.

Mr. Kimmins applied a "work hard, do right, play to win and be the best you can be" attitude in everything he did. He looked for the best in people and believed there was good to be found in everyone. Mr. Kimmins considered his PHS students and staff his second family, and they rewarded him with a very full professional and personal life that he cherished.

Mr. Kimmins' awards and accomplishments include serving as President of the Texas Association of Secondary School Principles in 1962, being elected as Elder Emeritus of the First Christian Church in Borger, helping to found the first Boy Scout troop in Phillips, and serving as director of a Phillips Petroleum-sponsored summer recreation program for 22 years.

**Awards:** (2) \$1000 one-year award (\$500 per semester)

**Criteria:** A Sanford-Fritch High School Graduate in need of financial assistance.

**Mr. Robbins's** band had a record 14 straight UIL sweepstakes awards and won permanent possession of the marching and concert trophies in its class at the Tri-State Music Festival at Enid, Oklahoma. His band also won the Enid Festival's Million Dollar parade 11 times and was featured in the Cotton Bowl games in Dallas twice. Mr. Robbins was selected Bandmaster of the year by the Texas Bandmasters Association in 1969 and was installed in the Texas Bandmasters Hall of Fame. He retired in May 1969, after a 35-year career in music education and resided in Amarillo until his death on May 22, 1990.



**Awards:** (4) \$1000 one-year award (\$500 per semester)

**Criteria:** A West Texas High School Graduate in need of financial assistance

**Evelyn Hubbard Music Scholarship** Please see page 15 for more information on the Hubbard Scholarship.

**Award:** One (1) \$1000 one-year award (\$500 per semester)

### Chesty Walker Softball Scholarship

**Award:** One (1) \$1000 one-year award (\$500 per semester)

**Criteria:** TBD

## Endowed Named Scholarships

### Kim & Dr. I.Q. Sewell Memorial Scholarship

Dr. I.Q. Sewell and Viva Sewell established the Kim Sewell Memorial Scholarship Fund at Frank Phillips College upon the death of their son, Kim Sewell. When Dr. I.Q. Sewell died a few months later, Mrs. Sewell and her two sons, Randy Sewell and Dr. Ron Hendrick, decided to continue the scholarship in memory of Kim and I.Q.



All members of the Sewell family were returning adult learners. Viva is a past Frank Phillips College Governing Board of Regents member and retired educator. Dr. I.Q. Sewell obtained both his Bachelor of Science degree and Doctorate of Veterinary Medicine later in life, and at the time of his death he was a student at FPC.

This scholarship benefits serious adult students interested in pursuing their education at FPC. Applicants must be at least 22 years of age (re-entering adults), must have completed 6 hours of course work, and must have maintained a 2.5 GPA at FPC to be considered. All applicants are required to apply for financial aid and to complete the attached application.

**Award:** \$500 one-year award (\$250 per semester)

- Criteria:**
- A student who is at least 23 years of age
  - A returning student who has completed at least 6 hours of course work
  - A student with a minimum 2.5 grade point average

### D. Russell Weston Business Management Memorial Scholarship

Wilma Weston established this scholarship in loving memory of her late husband.

**Award:** \$500 one-year award (\$250 per semester)

- Criteria:**
- A high school graduate or currently enrolled FPC student
  - A student majoring in Business Management
  - A student with a minimum 3.0 grade point average

### D. Russell Weston Engineering Memorial Scholarship

Wilma Weston established this scholarship in loving memory of her late husband.

**Award:** \$500 one-year award (\$250 per semester)

- Criteria:**
- A currently enrolled FPC student
  - A student majoring in Pre-Engineering or related major
  - A student with a minimum 3.0 grade point average



### Wilma Weston Education Scholarship

Wilma Weston established this scholarship to assist a student majoring in education.

**Award:** \$500 one-year award (\$250 per semester)

- Criteria:**
- A high school graduate or currently enrolled FPC student
  - A student majoring in Education
  - A student with a minimum 3.0 grade point average



# Futures' Scholarships

The Futures' Scholarship Program is a collaborative effort of the Borger Chamber of Commerce and the FPC Development Corporation that benefits the community, students, and the college. The Futures' Scholarships are designed to bring non-Hutchinson County resident students to FPC to pursue their education and to reside in Hutchinson County, thus spurring the economic vitality of Borger, Hutchinson County, and ultimately the Texas Panhandle.

The Futures' Scholarship will be applied toward student housing.

**Award:** \$600 one-year award (\$300 per semester)

**Criteria:**

- Students residing outside of Hutchinson County who plan to live in the FPC residence halls
- Students with a minimum 2.5 grade point average or an equivalent GED score

## Private Scholarships

### Private Scholarships

The individuals and organizations listed in this category contribute significantly to the scholarship opportunities of Frank Phillips College students by establishing private scholarships. Frank Phillips College and the Frank Phillips College Development Corporation coordinate the awarding process of the following scholarships, which may include the involvement of a private selection committee.

These scholarships are awarded based upon the criteria established by the donor and the Frank Phillips College Office of College Advancement and the Development Corporation.

#### **Paul D. Belton Memorial Scholarship**

This scholarship was established by the Borger Independent School District Board of Trustees, Mrs. Paul D. Belton and family, and community members.

Mr. Belton was a member of the Borger Independent School District Board of Trustees for twenty-eight years and during his tenure served as president, vice president, and secretary. He had a genuine interest and determination to see that the Borger School District provided students with a quality education regardless of ethnicity, economic status, or academic ability.



Mr. Belton served on many local, state, and national committees, boards, and organizations, which included the Texas Association of School Boards. He was voted State Trustee of the Year by the Texas Classroom Teachers Association and was selected Borger Chamber of Commerce Citizen of the Year.

Mr. Belton had a deep commitment to and made a significant contribution to the school district, the community, and his church, where his leadership played a vital role in the success of each of these entities.

**Award:** (2) \$500 one-year awards (\$250 per semester)

**Criteria:** • A Borger High School Graduate with a minimum 2.5 grade point average

#### **Better Business Bureau (BBB)**

**Award:** (1) \$500 one-year award (\$250 per semester)

**Criteria:** • Business Major

#### **Borger Bank, GED Graduate Scholarship**

**Award:** \$500 one-year award (\$250 per semester)

**Criteria:** • GED graduate

#### **Canadian River Book Scholarship**

This scholarship was established by FPC Anthropology instructor Deborah Summers upon the publication of her book, *The Canadian River: A Photo Journey*. A portion of the proceeds from the book's sale are being used to establish this scholarship.

**Award & Criteria:** To be determined



# Private Scholarships

## Cattle Brands & Trees Scholarship

The Cattle Brands & Trees scholarship, donated by the M.E. Kasch family, is designed to emphasize the historic value of exhibits of cattle brands displayed in the Classroom Learning Complex and to draw attention to the native trees and shrubs growing on the FPC campus.



*Kirstie and Katey Kasch identify their family cattle brand on the historic Wall of Brands in the Classroom Learning Complex.*

The scholarship is available for five (5) Phi Teta Kappa (PTK) students each semester who need financial assistance for membership. Students should apply to their PTK sponsor using the standard scholarship application form, which is available in the Office of Student Services. The scholarship applicant must attach to the standard scholarship application form the following:

- a) A sketch of and paragraph describing 5 brands located in the CLC building
- b) A sketch of and paragraph describing 3 trees on the FPC campus (applicant is allowed to ask the Biology Department for help in identifying the trees' species and location).

**Award:** (5) \$50 awards per semester

**Criteria:** Meet criteria for PTK membership

## ConocoPhillips Jerry Demos Memorial Scholarship

ConocoPhillips Borger Refinery established this scholarship in remembrance of Jerry Demos, past Operations and Maintenance Manger of the Borger Refinery. Demo's vision, leadership, and sincere appreciation for all people facilitated continuous improvement in the Refinery and a closer, more responsible relationship with the community. This scholarship is awarded to five Frank Phillips College students in the Industrial Arts, Math, Science, or Welding discipline.

**Award:** Five (5) \$1,000.00 one-year awards, (\$500 per semester)

**Criteria:**

- To benefit students in the Industrial Arts, Math, Science, or Welding disciplines

## Mom Edwards Memorial Scholarship

Established by Maxine Brown in June of 2000 through the Frank Phillips College Development Corporation in memory of Juanita Edwards, a long-time Goins Hall Director

**Award:** \$400 one-year award (\$200 per semester)

**Criteria:** None

## Louise Forman Scholarship

**Award:** \$500 one-year award (\$250 per semester)

**Criteria:**

- English Teacher (Education Major)
- Currently enrolled FPC student with a minimum 3.0 grade point average in at least 15 hours of completed course work
- Recipient must maintain a minimum 3.5 grade point average with a 4.0 in English

# Private Scholarships

## Frank Phillips College Computer Club

**Award:** \$500 one-year award (\$250 per semester)

**Criteria:** • Computer Information System major

## Frank Phillips College Plainsmen Partners Scholarship

**Award:** \$400 one-year award (\$200 per semester)

**Criteria:** • Currently enrolled FPC student with a minimum 3.0 grade point average in at least 12 hours of completed course work

## H & H School Employees Federal Credit Union FPC Scholarship

**Award:** \$1,000 one-year award (\$500 per semester)

**Criteria:** • A currently enrolled FPC student who has completed at least 30 hours of course work with a minimum 3.0 grade point average  
• A Hutchinson, Moore, Carson, or Hansford County Resident

## Evelyn Hubbard Memorial Scholarship

This scholarship was established by Donna Haddock Forbes in the fall of 2003, in loving memory of her longtime music teacher.

Evelyn Plunkett Hubbard was born in Wortham, Texas. She began playing the piano at the age of four. In her early years of formal instruction she complained of the necessity of “note-learning” and scales, but with maturity she realized the importance of education and with it the “note-learning” and theory. Her dream of becoming a concert pianist changed to being a wife, mother, and teacher when she married D. H. Hubbard. She began private lessons in a studio in Crane, Texas. Upon moving to Phillips, Texas in 1940, the private lessons continued in her home. In 1942, Mrs. Hubbard began her teaching career. She taught for 20 years in the Phillips schools, moving from elementary to middle school and on to the Phillips High School Choral Director. Her sweepstakes-winning choirs became legendary. During this time at Phillips she also earned her Masters in Music Education from West Texas State University.



In 1962 Mrs. Hubbard became the Director of the Music Department at Frank Phillips College. She established the Plainsmen Combo which consisted of the FPC choir and students who played musical instruments. These students practiced on their own time under the direction of “Mother Hubbard.” The Combo played for FPC basketball games and performed for surrounding schools and civic groups. The Combo eventually became known as *The FPC Medicine Show*. This show promoted FPC to many new and eager students. In 1970 she became the Chairman of the Division of Fine Arts at FPC. Evelyn had the ability to build programs and to promote the abundant talent at FPC. Her dreams were realized on stage when it required two nights to accommodate the crowds that attended productions such as the annual *Hootenanny*.

Mrs. Hubbard and FPC graduate Paul Biggs created the Phil-Originals. This group became known internationally. They sang for such events as Governor John Connally’s programs and the Lions International Convention in Chicago. The sponsor of this scholarship, Donna Haddock Forbes, was a member of this group.

Mrs. Hubbard was a member of the 20th Century Club, the Music Club, Tri-City Concert, Texas Congress of Parents and Teachers, and Alpha Chi. She was the organist/pianist for the Phillips and Fairlanes Baptist churches for 50 years. She was awarded The Altrusa International Community Services Award in 1973.

Evelyn’s teaching and motivation of students was outstanding, but her greatest attribute was her ability to understand, encourage, and love her students. Many of her students reached goals they had never dreamed of. Mrs. Hubbard inspired her students to see their potential and to succeed. She is the epitome of the FPC slogan, Start Here...Go Anywhere!

Evelyn and D. H. were married for 69 years. They had one daughter, JoAnn Kuhrt, who with her husband Harry gave them four grandchildren and 11 great-grandchildren.

**Award:** One (1) \$300 one-year award (\$150 per semester)

**Criteria:** • A student majoring in music (choral, voice, or piano)

## Private Scholarships

### Hutchinson County Cornelison Scholarship

**Award:** \$500 one-year award (\$250 per semester)

**Criteria:**

- Hutchinson County High School Graduate
- Participated in FFA, 4-H or an Agriculture Major
- A minimum 3.0 grade point average

### The Hutchinson Co. Retired School Personnel Association Scholarship

**Award:** \$1000 one-year award (\$500 per semester)

**Criteria:**

- Hutchinson County High School Graduate. This scholarship has a rotation process among Borger High School, Sanford-Fritch High School, and West Texas High School. The scholarship for this year will be awarded to a Borger HS graduate
- A minimum 3.0 grade point average
- A student majoring in Education

### The Jane Phillips Society Scholarship

**Award:** \$500 one-year award (\$250 per semester)

**Criteria:**

- High School Graduate, Re-Entering Adult, or currently enrolled FPC student
- Resident of the Texas Panhandle
- A minimum 2.5 grade point average

### Michael Judd Memorial Scholarship

To provide a living memorial to their son, Douglas Michael (Mike) Judd, Doug and Jerrie Judd set up a scholarship fund at Frank Phillips College where Mike was a student at the time of his death in an auto accident in 1977.

Mike attended St. John's grade school, North Middle School, and graduated from Borger High School. While attending Borger High, Mike participated in football, track, Thespian Club, in which he was a cast member of the plays *Oliver*, *Li'l Abner*, and *American Kaleidoscope* and was a candidate for the "Most Friendly." As a four-year member of the varsity choir, Mike attended solo and ensemble contests and was choir president his senior year. During the summer of 1977, Mike toured Europe with the American Youth Symphony and Chorus.

Mike was a member of the National Honor Society and graduated 12<sup>th</sup> in his class of 202. He received a two-year scholarship to FPC from Phillips Petroleum Company. While attending FPC, Mike majored in Computer Science and was on the Dean's Honor Roll.

Mike was an active member and song leader at St. John's Catholic Church and a member of the Catholic Youth Organization. He volunteered at the Summer Activity Program for Buttercup House, Inc. Child Development Center, and was a favorite with all of the children, especially those who needed a male role model in their lives. For three years Mike worked at K-Bob's Steak House in Borger.

The Mike Judd Memorial Scholarship Fund is a continuing reminder of a fine young man and is a way of providing worthy young people with funds to further their education at Frank Phillips College.

**Award & Criteria:** The amount and the recipient are determined by Jerrie Judd on an annual basis.



## Private Scholarships

### Raymond & Myrtle Keith Memorial Scholarship

This scholarship was established by Glenda K. Guyton, June Voigt, Jan Summers, and the late Donna Pavillard to provide a living memory of their parents.

**Award:** \$500 one-year award (\$250 per semester)

**Criteria:**

- Currently enrolled FPC student
- A minimum 3.0 grade point average in at least 12 semester hours of completed course work
- Resident of Hutchinson County

**Preference:** First preference will be given to a qualified student with a major in Business.



### Inez & HC McCarley Foundation Trust Scholarship

**Award:** (5) \$1,000 one-year award (\$500 per semester)

**Criteria:**

- Scholarship recipients must be from or living in Pampa, Texas

### Nell K. Mitchell Memorial Scholarship

To honor Nell Killough Mitchell, her daughter and son-in-law, Becky and Randy Hanna, established a Memorial Scholarship Fund in her name.

Nell was the third generation of her family to be a part of the Borger community, owning and operating the Crutch Ranch. She was the mother of three, a granny to eight, and a friend to many. Nell died of leukemia in August of 1995.

Nell was a champion for people actively trying to better themselves and a champion for children, parents, and young adults trying to find their way in the world. There are few people with such a compassionate and generous heart as hers.

To honor Nell's memory, the Hannas would like to continue her giving spirit. To Nell, faith, home and family were always first. She believed education and determination were the keys to the betterment of anyone's life situation.

A semi-annual scholarship was begun in her honor. Scholarship recipients receive \$250.00 per semester. The recipient is eligible for this award while enrolled in the Frank Phillips College Cosmetology program.

**Award:** \$500.00 one-year award

**Criteria:** Cosmetology Student

**To apply:** Complete the Frank Phillips College General Application in the center of this publication.



# Private Scholarships

## Sharron K. Osborne Technical Scholarship

**Award:** (1) \$1,500 one-year award (\$500 Fall, \$500 Spring, \$250 Summer I, \$250 Summer II)

**Criteria:**

- Student pursuing a Welding, Agriculture, or Pre-engineering degree
- Involvement in school and community activities, employment experience, GPA and financial need will be considered.

## Pantex Federal Credit Union FPC Scholarship

**Award:** \$1,000 one-year award (\$500 per semester)

**Criteria:**

- A student who is a member of the Pantex Federal Credit Union
- A student who is not on an athletic scholarship

## Rotary Club of Borger

**Awards:** (2) \$500 one-year award (\$250 per semester)

**Criteria:**

- Students with high academic achievement and guiding principles underpinned with the Rotary Four-Way Test:
  1. Is it the **truth**?
  2. Is it **fair** to all concerned?
  3. Will it build **goodwill** and better friendship?
  4. Will it be **beneficial** to all concerned?
- This fund supports two scholarships:
  - One Female Borger High School Graduate
  - One Male Borger High School Graduate

## Perryton Rotary Club - Allen Campus

The purpose of this scholarship is to assist with tuition, fees, and book costs associated with a returning adult learner who demonstrates a financial need and is attending the Allen Campus in Perryton.

**Awards:** (2) \$500 one-year award (\$250 per long semester per student)

**Criteria:**

- Recipient must attend the FPC Allen Campus
- Recipient must be a full-time student
- High school graduate / GED recipient
- Returning student - Recipient must be a returning adult learner who has completed at least one successful (3.0 or better GPA) semester at the FPC Allen Campus
- Recipient must have financial need
- Recipient must be involved in volunteer service and community activities

## Private Scholarships

### Donna Haygood Sarchet Memorial Scholarship

Mary Lou Haygood established this scholarship in memory of her daughter.

**Award:** (1) \$500 one-year award, (\$250 per semester)

**Criteria:**

- Business Major

### Schmitz Scholarships

The Adolph Schmitz family relocated to an oil boom town that has since developed into their beloved hometown - Borger. The family purchased land from Borger's founder, Ace Borger, and opened the Cities Service Oil Company dealership. Adolph Jr. was soon working with his father. After serving his country in World War II, he returned home and in 1952 married Bobbye Adams, a teacher at Borger High School.

After her children entered junior high, Bobbye returned to BHS to teach physical education and coach tennis, a position she held for more than twenty years. Their children, Dirk Schmitz and Shelley Schmitz Sweatt, graduated from BHS and attended Frank Phillips College on tennis scholarships before continuing their pursuits of higher degrees.

The Schmitz family has continued to support Borger and FPC and has provided the means by which many students have been able to continue their post-secondary education. Upon Adolph's death in 1996, an official scholarship was established in his memory and in honor of Bobbye, to recognize the Schmitz's profound belief in the benefit of a sound education.

**Awards:** (1) \$500 one-year award (\$250 per semester)

**Criteria:**

- Students with a minimum 3.0 grade point average
- Students in need of financial assistance
- Hutchinson County High School Graduate. Selection to be made from one of the following schools:
  - Borger High School • Sanford-Fritch High School • West Texas High School

## Private Scholarships

### Elaine Sowder Memorial Scholarship

Elaine Mona (Weatherly) Sowder was born February 24, 1915 in England and came to the United States at the age of 5. Along with her husband, Thad, and her son and daughter, she moved to Borger, Texas in 1950.

After Thad passed away in 1981, Elaine became one of Borger's most active senior citizens. She served Meals-On-Wheels, joined the First Christian Church choir, a community theater group, and a philatelic (stamp collecting) club to name a few. Elaine also became a fitness enthusiast and was proud to accomplish a strenuous hiking trip in the mountains of New Zealand. She enjoyed several other international trips.



Two of Elaine's greatest joys came from volunteering as a nurse's aide at Golden Plains Community Hospital and attending Frank Phillips College. Elaine became well known as an avid supporter of the FPC athletic teams and an honorary cheerleader for men's basketball. In 1986, at age 71, she graduated from FPC with her Associate's Degree. Elaine continued her volunteer work at the hospital until her death in 1994. It was her wish that this scholarship be established to assist nursing students at FPC.

**Award:** \$500 one-year award (\$250 per semester)

**Criteria:**

- A nursing student (Note - A student may re-apply for a second year if they maintain a minimum 3.0 grade point average their freshmen year)

**Deadline to apply:** November 15th

### Fritz Thompson Memorial Scholarship

This scholarship was established by Peggy Thompson in loving memory of her late husband.

**Award:** \$500 one-year award (\$250 per semester)

**Criteria:**

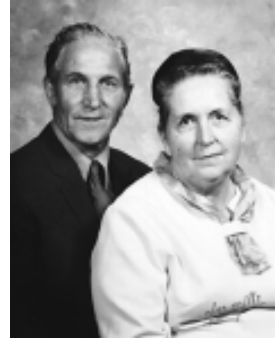
- A currently enrolled FPC student
- A minimum 3.0 grade point average in at least 12 semester hours of completed course work
- A resident of Hutchinson County
- A student majoring in Business, Government, Public Service, or Law Enforcement

## Private Scholarships

### Roy & Robbie Tilson Memorial Scholarship

Established by Lonnie and Patricia Tilson, to honor his parents, this scholarship fund is for both traditional and non-traditional students in need of financial assistance and who are serious about continuing their education.

Roy R. Tilson was born March 17, 1901, in Knoxville, Tennessee. He moved to Fannin County in 1920. He met Robbie Mae Payne in Fannin County and they were married there in 1927. He worked as a farmer and farm owner until 1943 when the family moved to Borger.



Mr. Tilson worked for Phillips for a short time and then opened a grocery store in the Clearview Addition. He operated this store until about 1962 when he and his wife built a new home and antique store next to Westlawn Memorial Cemetery on the Fritch highway. He continued to operate the antique store until his death in 1983. Several news stories were published over the years about his “western antiques.” He was a long-time supporter of civic and charitable organizations in Hutchinson County including Girls’ Town, which later became Cal Farley’s Family Program.

Mrs. Tilson continued to live in the home until near her death in October of 1998. She was very active in the United Pentecostal Church and served in various functions with the Women’s Auxiliary.

The Tilson’s six children attended Borger High School. Lonnie and Patricia Woodfill Tilson were the first married students to attend Frank Phillips from 1955-1956. An article about them was published in the college newspaper. They then attended WTSU in Canyon where they received their degrees. The Tilson’s long-term connection to Borger, the Borger schools, and Frank Phillips College is the primary reason for establishing this memorial scholarship fund.

**Awards:** (2) \$600 one-year awards. (\$300 per semester) The incoming freshman recipient of this award will receive this scholarship for two years provided that they continue to meet all requirements.

**Criteria:**

- A student with a minimum 3.0 grade point average

## Private Scholarships

### Ms. Vera Walker Scholarship

This scholarship was established in December 2002 by Maxine Brown through the Frank Phillips College Development Corporation in honor of her mother, Vera Walker.

Vera was the first Cafeteria Manager at Frank Phillips College and served in that capacity for 15 years. She also worked in the Borger Independent School District Cafeteria for 15 years where she served as president of the Independent Public School Cafeteria Managers. Vera taught Sunday School at the First United Methodist Church for 40 years.

**Award:** \$400 one-year award (\$200 per semester)

**Criteria:** None



### Edker Wheeler Memorial Scholarship

Edker L. "Ed" Wheeler was a caring, compassionate, and dedicated individual with an enthusiasm for life that was contagious to those associated with him. Ed was born in Spatanburg, South Carolina, on December 4, 1930. He graduated from high school in Pendleton, South Carolina. In 1953, Ed enlisted in the United States Army where he proudly served his country until his retirement in 1976. His 23 years of active service included several foreign campaigns.

Upon his retirement, Ed and his family moved to Amarillo, where he began his second career in law enforcement. Ed attended Texas Panhandle Law Enforcement Academy while working for Texas State Technical Institute as a campus police officer.

In 1977, Ed went to work at the Hutchinson Co. Sheriff's Office in Borger. During his employment, Ed attended FPC where he earned his Associate's Degree. Later he instructed law enforcement classes at Borger High School as college-prep classes.

During Ed's sixteen-year career (1977-1993) in law enforcement, he earned various positions of responsibility. He was appointed Shift Supervisor and later promoted to rank of Lieutenant. Finally, he was promoted to the position of Chief Deputy Sheriff. This position made him second in command of the highly-ranked Sheriff's Office.

Ed served as one of the founders and later president of the Texas Chief Deputies Association, which serves all 254 counties of Texas. He was active in many Hutchinson County civic organizations, including the Hutchinson County American Red Cross, and the Borger Kiwanis.

Because of the dedication of this professional law enforcement officer, the citizens of Hutchinson County have lived a safer more secure life. In his memory, and through this scholarship, Ed Wheeler continues to serve the community.

**Award:** \$500 one-year award for full-time student (\$250 per semester)

\$300 one-year award for part-time student (\$150 per semester)

**Criteria:** Any Employee (must be employed for at least one year prior to application) or Dependent of the

- Borger Fire Department
- Borger, Fritch & Stinnett Police Departments
- Hutchinson County Sheriff Department
- Hutchinson County Department of Public Safety
- 6666 Ranch

## Private Scholarships

### Dixie Young Memorial Scholarship

Roy Young and family established an annual memorial scholarship in memory of Dixie Young. Dixie passed away after a 13 year battle with cancer on June 4, 2007. She is remembered by her family and friends as a positive, courageous, and caring person.

Dixie was born on June 18, 1937 in Pampa, Texas. She was a homemaker and a member of First Baptist Church in Borger. Dixie married Mr. Roy Young on December 28, 1984 in Perryton, Texas.



**Award:** One (1) \$1,000.00 one-year award, (\$500. per semester)

**Criteria:** To benefit a student from Borger, Stinnett, Fritch, Perryton, or Panhandle who is pursuing a degree in the education field.

# **Institutional Scholarships**

### **FPC Departmental Scholarships**

Departmental scholarships are awarded based on performance, merit, skill, and ability. Specific information and application requirements may be obtained by contacting the appropriate department. The department faculty select recipients by April 15th.

### **FPC Athletic Scholarships**

Athletic scholarships are awarded by the Athletic Department and are based on performance, skill, and ability. Scholarships awarded in men's and women's basketball, men's baseball, women's softball, and women's volleyball are administered according to Western Junior College Athletic Conference and National Junior College Athletic Association guidelines. Information concerning these scholarships can be obtained in the Athletic Department.

Athletic scholarships are awarded for men's and women's rodeo in accordance with the Southwest Region of the National Intercollegiate Rodeo Association and for livestock judging in accordance with the National Junior College Coaches Association. Information concerning these scholarships can be obtained in the Agriculture Department.

Cheerleader Scholarships are available for students interested in promoting school spirit. Recipients are selected by tryouts and/or recruitment by the sponsor. Information concerning these scholarships can be obtained by calling 457-4200, ext. 761 or 457-4218.

## Other Scholarships

### Kiwanis Club of Borger Tri-City Educational Fund

This fund was established to benefit students who attend Frank Phillips College. This fund will be treated as a loan and forgiven upon securing an associate degree from FPC within two years.

**Award:** \$250 per semester

**Criteria:**

- A Hutchinson County resident (The recipient must maintain a 2.5 grade point average and take at least 12 hours per semester.)

**Contact:** Opportunity Plan, Inc., Kathy Wright, P.O. Box 1035, 504 24th St., Canyon, TX 79015.

Phone: 806-655-2528 Fax: 806-655-9513

**To apply:** Send the following information to the above contact:

1. A letter of reference from student's religious leader or write an essay centered around the objectives of Kiwanis International:
    - To give primacy to the human and spiritual rather than to the material values of life.
    - To encourage the daily living of the Golden Rule in all human relationships.
    - To promote the adoption and the application of higher social, business, and professional standards.
    - To develop, by precept and example, a more intelligent, aggressive, and serviceable citizenship.
    - To provide, through Kiwanis clubs, a practical means to form enduring friendships, to render altruistic service, and to build better communities.
    - To cooperate in creating and maintaining that sound public opinion and high idealism which make possible the increase of righteousness, justice, patriotism, and goodwill.

© Copyright 2000 Kiwanis International, All Rights Reserved
  2. A letter of reference from the student's favorite school teacher.
  3. A letter from each of two character references for the student.
- To break any tie - the award will go to the student with the greatest financial need.

### Malouf & Iris Abraham Scholarships - Amarillo Area Foundation

Established to benefit residents of Gray, Lipscomb, Hemphill, Ochiltree, Roberts and Wheeler Counties. Recipients may attend Frank Phillips College

**To apply:** Contact the Amarillo Area Foundation: (806) 376-4521

## Other Scholarships

### Pantex Federal Credit Union Scholarship Contest

**Award:** First Prize: \$1,500; Second Prize: \$1,000; Third Prize: \$500

1. Contest is open to high school seniors graduating in 2005 who are members of Pantex Federal Credit Union.
2. A contestant must have a share account with his/her own name as the primary member at the time the entry is submitted.
3. The theme of the essay is **“How should a credit union serve your financial needs better than a bank?”**
4. Contestants should indicate on the first page of each copy the number of words in the paper. The maximum number of words allowed is 750.
5. Entry is to be judged on meaningful content, accuracy, clarity and originality, and become the property of Pantex Federal Credit Union.
6. Entry is to contain the original and three copies of the essay, without covers, folders or binders.
7. Entry is to be submitted on a separate sheet containing the name, address, and phone. **None of this information should appear anywhere in the essay paper itself.**
8. Scholarship funds will be made payable to the school on behalf of the winners. Prizes must be utilized before the start of the third semester after notification of winners. Funds not utilized will be forfeited and returned to the credit union.
9. Entries must be postmarked or received by March 31.
10. Send entries to Scholarship Contest, c/o Pantex Federal Credit Union, P.O. Box 5206, Borger, TX 79008.
11. Failure to comply with any of the above rules may result in the disqualification of the entry.

In addition to the other scholarships noted, many civic clubs, organizations, and businesses offer scholarship programs for community members, employees, and/or dependents. We encourage you to also search for scholarship opportunities on the Internet; however, if you are asked to pay for access to scholarships, this is not a credible site. **You should never pay for scholarship applications.**

# Names & Numbers to remember

## ACADEMICS

*Shannon Carroll, Dean of Academic Affairs*

scarroll@fpctx.edu

Phone: ext. 732

## ADMISSIONS & RECORDS

*Beth Raper, Director of Enrollment Management*

braper@fpctx.edu

Phone: ext. 741 or 742

## ATHLETICS

*John Green, Athletic Director*

jgreen@fpctx.edu

Phone: ext. 765

## FINANCIAL SERVICES

*Dianne Ensey and/or Beverly Fields,*

*Co-directors of Student Financial Services*

density@fpctx.edu, Phone: ext. 718

bfields@fpctx.edu, Phone: ext. 796

## COLLEGE ADVANCEMENT

*Jerri Aylor, College Advancement*

jaylor@fpctx.edu

Phone: ext. 798

## STUDENT SERVICES

*Becky Green, Dean of Student Services*

bgreen@fpctx.edu

Phone: ext. 721

## WORKFORCE

*Patti Wieronski, Dean of Workforce Education*

pwieronski@fpctx.edu

Phone: ext. 802

**FPC Borger**  
P.O. Box 5118  
1301 W. Roosevelt  
Borger, TX 79008-5118  
(806) 457-4200  
www.fpctx.edu

**FPC Perryton**  
**Allen Campus**  
2314 S. Jefferson  
Perryton, Texas 79070  
(806) 648-1450  
www.fpctx.edu